

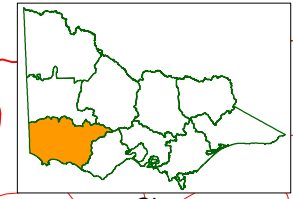
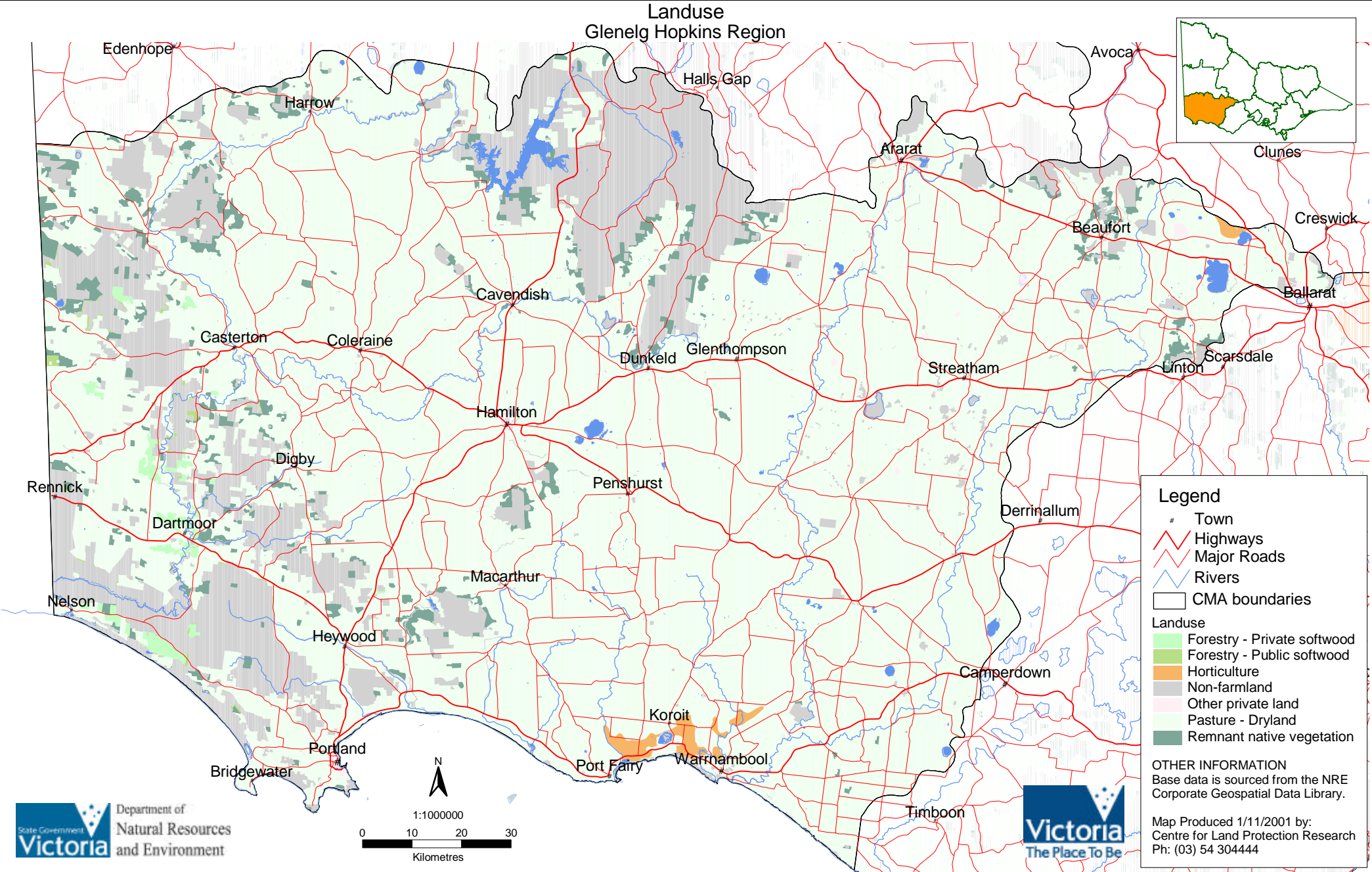
Land use in the Glenelg Hopkins region

Approximately 81% of the Glenelg-Hopkins Catchment Management Region has been developed for agricultural use. About 2% of the catchment area comprises pine forest, while 16% is native forest and less than 1% is used for urban and industrial development (Glenelg CaLPB, 1997). The main agricultural land uses are dominated by dryland pasture (over 2 million ha) and also include horticulture.

The Hopkins River Basin, which covers an area of roughly 968 000 ha in the eastern half of the Glenelg-Hopkins Catchment Management Region, is entirely cleared for pasture and other agriculture, except for a small area of forest in the north. The Portland Coast Basin, which covers just under 400 000 ha of land in the south of Glenelg-Hopkins, is a gently undulating to flat catchment which is mostly cleared for agriculture. Two thirds of the Glenelg River Basin (1.26 million ha in the region's west) has been cleared for pasture and is still largely wool production with prime lamb also significant. The beef industry is well established but dairy has been steadily declining in recent times.

Public land in the region is dominated by National Parks, covering over some 200 000 ha. The Grampians National Park covers most of this area (ie. 167 100 ha). State Parks, Coastal Parks and Reference Areas combine to comprise almost 35 300 ha throughout the region.

Landuse Glenelg Hopkins Region



- Legend**
- # Town
 - Highways
 - Major Roads
 - Rivers
 - CMA boundaries
- Landuse**
- Forestry - Private softwood
 - Forestry - Public softwood
 - Horticulture
 - Non-farmland
 - Other private land
 - Pasture - Dryland
 - Remnant native vegetation

OTHER INFORMATION
 Base data is sourced from the NRE Corporate Geospatial Data Library.
 Map Produced 1/11/2001 by:
 Centre for Land Protection Research
 Ph: (03) 54 304444

